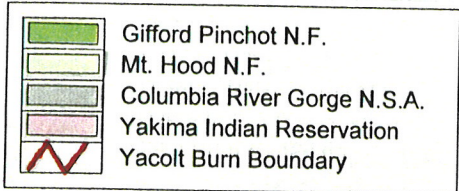
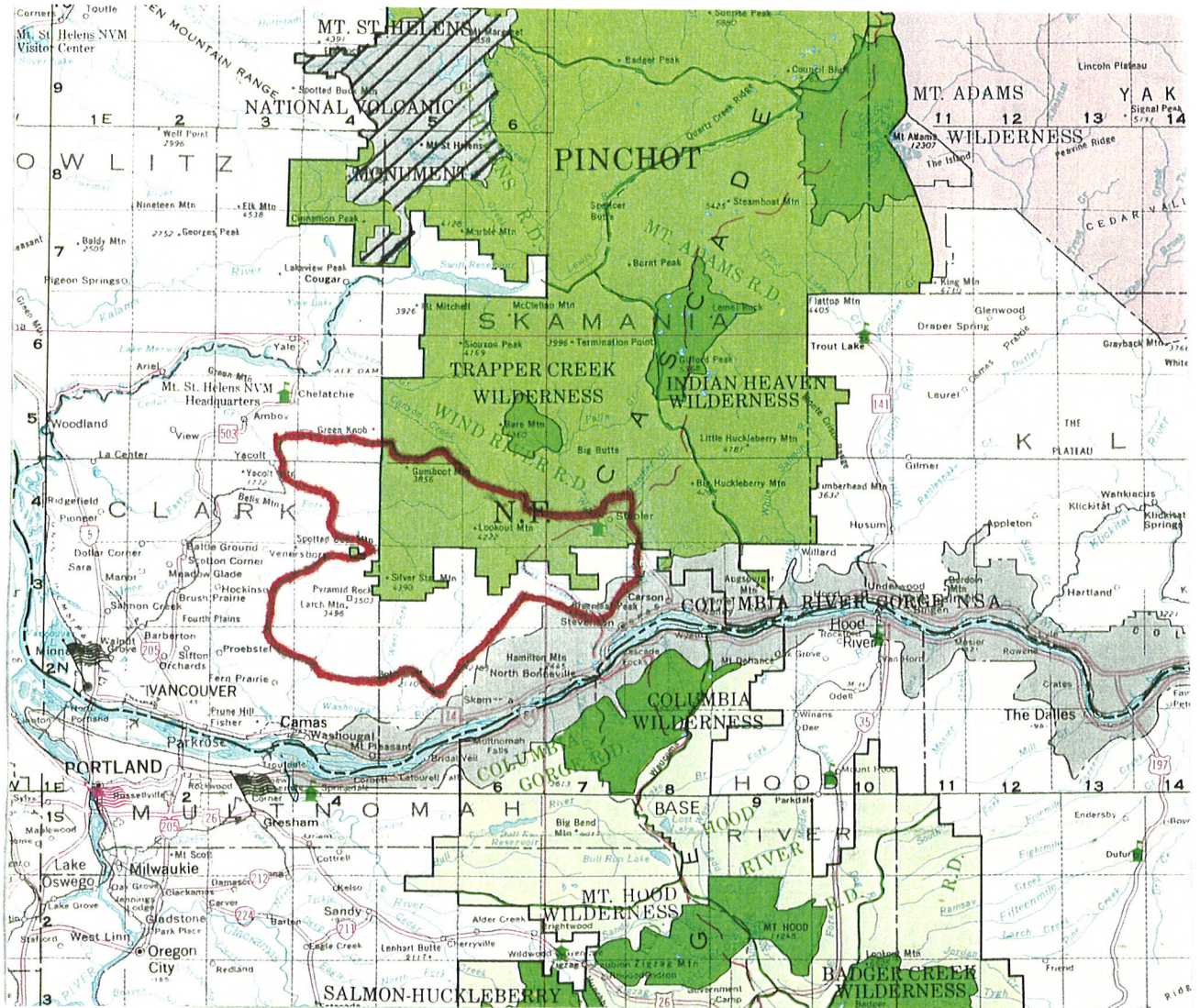


# Map I 1996 Columbia Gorge Forestlands Study Area

This map displays the portion of the Cascades that will be considered in this report and places that area in context with the following maps. Highlighted areas display the great amount of federal ownership and urban development in the general study area, forming a pattern in stark contrast to the fragmentation of the following map. Whereas the vegetation patterns of the area's forests are highly variable as illustrated in Map 2, the ownership and land use patterns are not. Note the National Forest Wilderness Areas are shaded with dark green. The approximate boundary of the 1902 Yacolt Burn was transferred from the Yacolt Burn State Forest Map (DNR 1991).



Map 2 Pre-1902 USDI Mount Hood Forest Patterns

This map displays the portion of the Oregon Cascades that will be most thoroughly considered in this report. It was constructed by the U.S. Geological Survey between 1899 and 1901 and first published in 1902 (U.S.D.I. 1902). The map displays the great amount of forest fragmentation that existed in the southern area of the study at the turn of the century and provides an excellent basis for interpreting local landscape photographs of that era (see Figures 9 through 12, and 14 in this report as examples). The map is further analyzed in Part V of this report.

